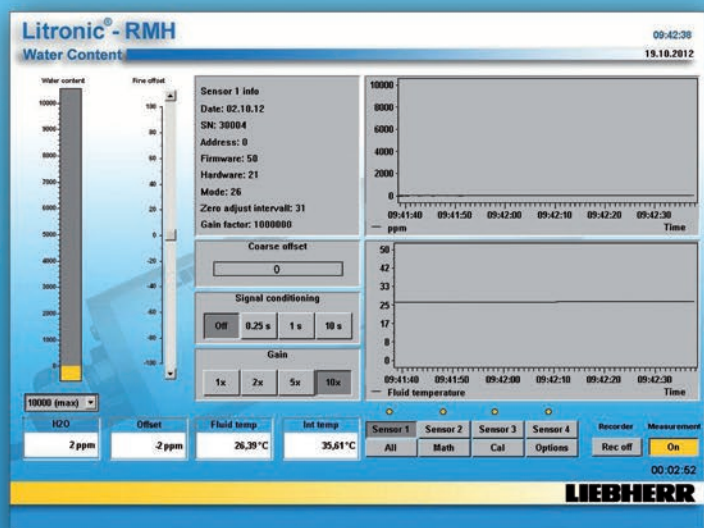


Litronic[®] -FMS III / RMH

Reliable

**water content determination /
trace moisture in liquids**



LIEBHERR

Applications:

The Liebherr in-situ-water concentration determination with Litronic®-FMS III / RMH12 records the water content (determining the concentration) also for very low ppm ranges in emulsions like:

- Diesel fuel
- Gear oil
- Hydraulic oil
- Motor oil
- Roller bearing oil
- Transformer oil
- Turbine bearing oil
- ...



Litronic®-FMS III / RMH12 sensor integrated in a test and laboratory plant to monitor the demulsification capacity of a diesel fuel filter.

Coaxial tube sensor RMH12



Features:

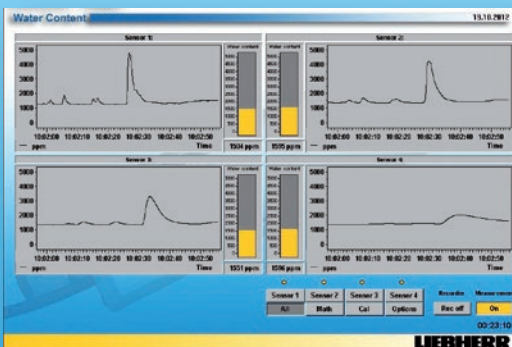
- Direct digital measurement
- 30 measurements per second
- High-resolution temperature measurement and temperature compensation of emulsion
- Coaxial condenser made of ceramic
- High-quality stainless steel housing
- Resistant against aggressive liquids and oils
- Easy process connection (Ermeto screw connection)
- Digital measured value transfer
- Up to 4 sensors per interchange and evaluation unit
- Max. Pressure 6 bar
- Medium temperature max. 60°C

Litronic®-FMS III Interchange and evaluation unit



to record, process and prepare the measured values from the sensor:

- DasyLab Runtime
- Parameterization and calibration (Litronic®-FMS III Software)
- Adjustable measurement range
- Field-bus connection
- Ethernet connectivity (LAN), (WLAN optional)
- Graphic visualization
- Modular design for easy enlargement
- Mounting on standard mounting-rail TS35 for easy switch cabinet mounting



Litronic®-FMS III Software

- Visualization
- Graphic chart recording
- Parameterization
- Calibration
- Cross-linking of sensor data
- Math module, junction of measured values
- Statistic data
- Data logging

Subject to technical modification

Liebherr-Mischtechnik GmbH

Postbox 145, 88423 Bad Schussenried / Germany

Tel. +49 (0)7583 / 949-0, Fax +49 (0)7583 / 949-399

www.water-content-measurement.com, E-Mail: info.lmt@liebherr.com

